

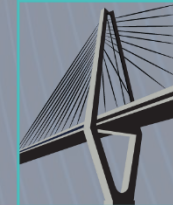
ALABAMA TOLL ROAD, BRIDGE
AND TUNNEL AUTHORITY'S

I-10 MOBILE RIVER BRIDGE

Progressive Design-Build Project

SUBCONTRACTOR & SUPPLIER OUTREACH EVENT

March 12, 2025



KIEWIT
MASSMAN
TRAYLOR
A JOINT VENTURE



**KIEWIT
MASSMAN
TRAYLOR**
A JOINT VENTURE

Agenda

INTRODUCTION TO KMT

Team Overview and Experience

PROJECT DELIVERY OVERVIEW

PROJECT OVERVIEW

Anticipated Contract Opportunities

WORKING WITH KMT

Diversity Commitment

NEXT STEPS

STATIONS AND NETWORKING

I-10 MOBILE RIVER BRIDGE

Meet Our Presenters



Kelli Kelly
Economic Inclusion



Lorne Caley
Project Manager



Jacob Halvorson
Preconstruction Manager



Dan Jansen
Procurement Manager



Scott Hoodenpyle
Construction Manager

Team Overview



Kiewit

For 140 years, Kiewit's construction and design engineering professionals have worked on the industry's most complex, challenging, and rewarding projects. With nearly 1,000 bridge projects delivered, valued at over \$19B, Kiewit leads the industry in innovative bridge engineering and construction.



Massman

Founded in 1908, Massman is a heavy civil and marine contractor focused on providing turnkey construction solutions in a variety of infrastructure markets. Massman's project teams have successfully completed some of the largest and most complex bridges in the United States.



Traylor Brothers, Inc.

Since 1946, Traylor Bros., Inc. has established its reputation upon tackling the most difficult bridge, underground, and marine projects. With a track record of more than 135 major bridge construction and rehabilitation projects across the nation — including world record cable-stayed structures and segmental bridges, Traylor Bros., Inc. is one of the most respected bridge contractors in North America.



Team Organization



Kiewit



MASSMAN
CONSTRUCTION CO.

TRAYLOR
TRAYLOR BROS., INC.

VOLKERT

SYSTRA
INTERNATIONAL
BRIDGE
TECHNOLOGIES



37

Cable Stay Bridge Projects
Combined Team Member
Experience



21

Alternative Delivery
Projects Delivered
Together



55%

Of all Cable-Stayed Auto Bridges in North America
Worked on by Company Personnel

Team Organization



Design –
Major Participants



Construction



A Joint Venture

Subcontractors/Suppliers

YOUR FIRM HERE

Local

PROJECT OVERVIEW

I-10 MOBILE RIVER BRIDGE

Kiewit | Massman | Traylor
a joint venture

I-10 Mobile River Bridge Project – ALDOT's Goals

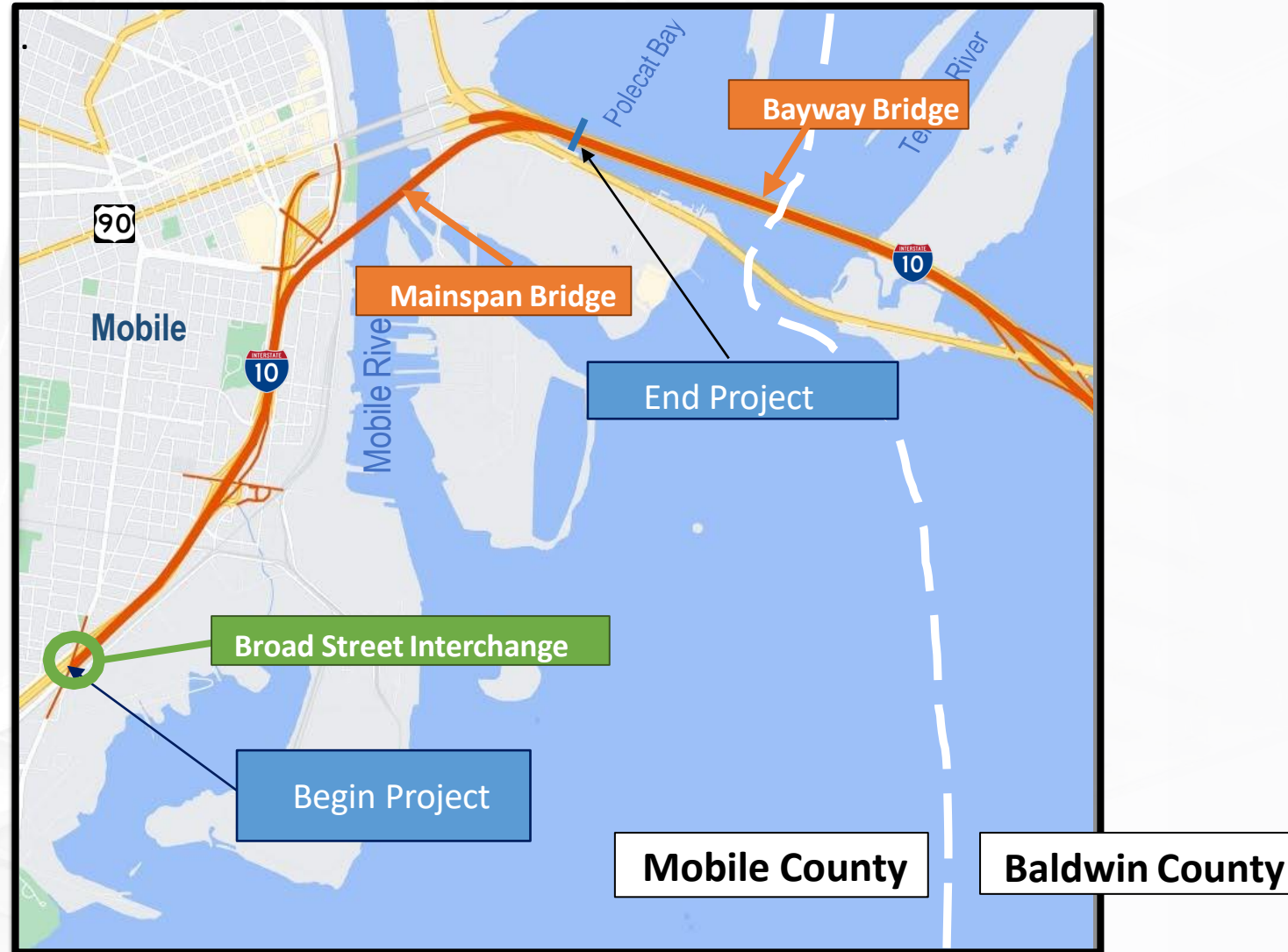
- Realize the benefits of progressive design-build project delivery;
- Add additional capacity along I-10 between Virginia Street in Mobile and the Mobile/Baldwin county line to alleviate traffic congestion and facilitate economic growth;
- Provide hazardous materials vehicles a path along I-10 so they are no longer required to detour through the Mobile Central Business District and Africatown community, minimize impacts to the maritime industry;
- Coordinate with the design-builder of the Bayway Project;
- Uphold the trust of Stakeholders and the public in delivering the Project;
- Deliver the Project within ALDOT's budget; and
- Complete the Project within five years from the date of the execution of the Design-Build Agreement.

I-10 Mobile River Bridge Project Overview

The Project begins at the I-10 Broad Street Interchange and ends at the Mobile/Baldwin county line.

It will provide a new six-lane cable-stay bridge over the Mobile River with approaches starting just east of Virginia Street in Mobile and ending between the I-10 Bayway Bridges, just east of the East Tunnel Interchange.

For more information about the Mobile River Bridge Project, visit:
<https://mobileriverbridge.com>

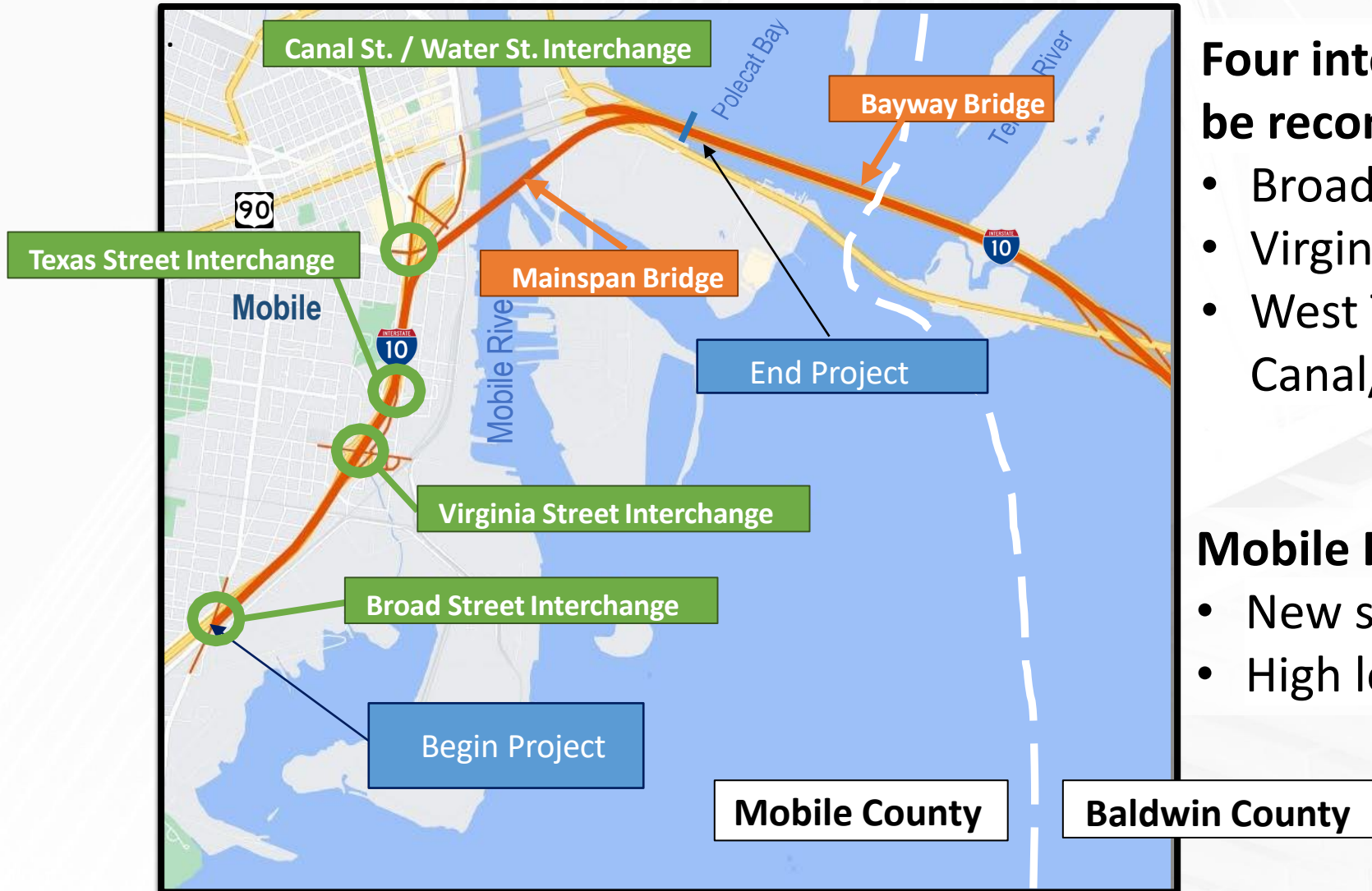


I-10 Mobile River Bridge Project – Main Span



- Minimum 100-year service life
- 215' Vertical Clearance over Channel
- Bridge security
- Scour
- Maintenance and inspection
- Stay cable system
- Wind loads
- Vessel collision

I-10 Mobile River Bridge Project – Interchanges



Four interchanges along I-10 will be reconstructed:

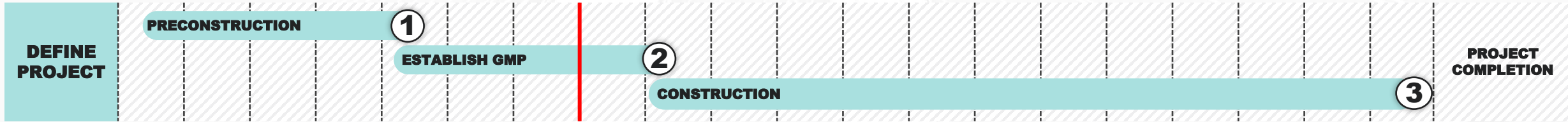
- Broad Street
- Virginia Street
- West Tunnel (Texas Street, Canal/Water Streets)

Mobile River Bridge:

- New six-lane, cable-stayed bridge
- High level approach spans

Excerpts/images obtained from <https://mobileriverbridge.com/industry-forum/>

Progressive Design-Build Delivery Model Overview



Business Inclusion Goals

Proposed project DBE goal: 2.79%

Firms should be certified as a Disadvantaged Business Enterprise (DBE) by the Alabama Unified Certification Program in order for their participation to count towards the established DBE goal. Firms currently DBE certified in their home state may apply for DBE certification with ALDOT.

For information about the DBE/Alabama Unified Certification Program process and certification requirements, visit: <https://cpmsapps2.dot.state.al.us/alucp/home>

**\$875 Million
in
Subcontractor
/ Supplier
Opportunities**

KMT is committed to meeting or exceeding the DBE goals established for this project.

PROCUREMENT OVERVIEW

I-10 MOBILE RIVER BRIDGE

Kiewit | Massman | Traylor
a joint venture

Upcoming Construction Services Opportunities

Construction Services:

- Asphalt Paving
- Boring-Directional Drilling
- Clear & Grubbing
- Electrical/Lighting/ITS
- Environmental Sub
- Fencing
- Flatwork Subcontract
- Grading
- Grinding-Grooving Subcontract
- Guardrail & Signs
- Joint Sealing
- Landscaping/Erosion Control
- Metal Decking
- MSE Walls
- Pavement Marking & Striping
- Pile Driving/Drilled Shafts
- Pothole Utilities - Vac Truck
- Quality Control
- Rebar/Post Tensioning
- Removals & Demolition
- Sawcutting
- Slipform Paving Barrier
- Street Sweeping
- Structural Steel
- Survey
- Traffic Control
- Trucking, Dump Trucks & Flatbeds
- Tugs
- Utilities & Drainage

Bid packages are anticipated for release in early April.

Upcoming Materials/Supply/Support Services Contract Opportunities

Materials/Supply/Support Services:

- Aggregates
- Bearings
- Bridge Rail
- Cable Stay Materials
- Concrete Accessories
- Concrete Pile
- Dewatering Supplies
- Drainage Materials
- Expansion Joints
- Fender Materials
- Formwork
- Geotextiles
- Misc. Metals
- Precast Girders
- Precast Deck Panels
- Precast Drainage Structures
- Precast MSE Wall Panels
- Ready-Mix Concrete
- Rebar
- Sound Walls
- Steel Piling/Sheet Piles
- Structural Steel
- Trestle Steel
- Utilities

Bid packages are anticipated for release in early April.

Procurement and Solicitation Process

Scope Packages Developed
by KMT



Sub/Supplier Outreach
Event



Bid Solicitations
Issued/Advertised*

Notification Methods

Direct email to
firms that have
completed Sub
Questionnaire

Bid invitations issued
directly to firms
registered in
BuildingConnected

Email sent to all firms in
certified database with
applicable NAICS codes

Notification/
distribution request
sent to local industry
orgs

Bid opportunities
advertised in local
publications



Sub requests/
receives
invitation to bid
for bid package



Sub prepares
bid/proposal



Bids Received by
KMT



Contract Award/
Negotiation



Debriefs to
non-selected
(upon request)

Solicitation Communications

- Solicitation ads posted in local publications
- Notification to targeted NAICS codes in certified database
- Bid invitations issued via BuildingConnected
- Direct email to project mailing list & scope specific bidders list
- Notification to community organizations
- Announcement on KMT project website



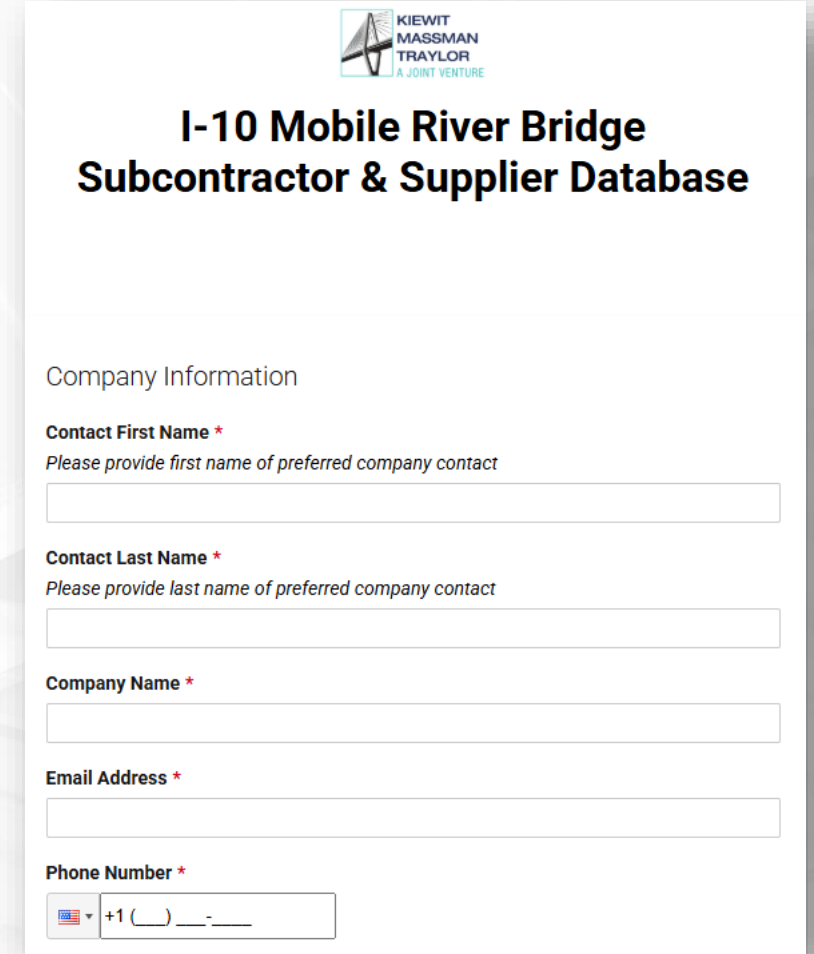
Next Steps: Join our Database

Step 1: Complete our Subcontractor Questionnaire to join our database and help us understand your capabilities and bidding interest for this project.

Step 2: Sign-up for **BuildingConnected** to be added to our bidder's list!

- Create an account with Building Connected
<https://app.buildingconnected.com/create-account>

KMT will utilize BuildingConnected for bid solicitations and vendor communications regarding plans/specs/addenda.



The screenshot shows a registration form titled "I-10 Mobile River Bridge Subcontractor & Supplier Database". At the top right is the logo for "KIEWIT MASSMAN TRAYLOR A JOINT VENTURE". The form is titled "Company Information" and contains the following fields:

- Contact First Name ***
Please provide first name of preferred company contact
- Contact Last Name ***
Please provide last name of preferred company contact
- Company Name ***
- Email Address ***
- Phone Number ***
+1 () - -



Best Value Selection Criteria/ Considerations

We evaluate companies on different criteria based on specific project requirements. This may include, but is not limited to:

- Demonstrated experience performing similar scope of work
- Firm capacity to perform work as specified in RFP
- Ability to provide the number of qualified personnel, materials, tools, and equipment to complete the required work on time
- Possession of the requisite licenses to perform the required work
- Safety record
- Consideration of the business inclusion goal for the Project
- Ability to commence construction consistent with schedule requirements provided in solicitation
- Bid Price (by comparing schedule of values)

Other Possible Considerations:

- ✓ Proven quality record
- ✓ Certifications
- ✓ Insurance and bonding capability
- ✓ On-time performance
- ✓ Years in business
- ✓ Reputation
- ✓ Past performance with JV Team members
- ✓ Value-added products and services

WORKING WITH KMT

I-10 MOBILE RIVER BRIDGE

Kiewit | Massman | Traylor
a joint venture

Safety Requirements

NOBODY GETS HURT

We take seriously our responsibility to keep each other and the public safe on our jobs. Our commitment to safety is demonstrated by:

- Craft and staff collaboration to lead safety efforts on our projects.
- Site-specific orientations and trainings to prepare all team members for the work.
- Hazard analysis requirement before any operation can begin and safety meeting with foremen and crews at start of each shift.
- Project safety inspection tours and assessments to identify areas for improvement and best practices.



Nondiscrimination

KMT is committed to inclusive employment and business practices that reflect equity, respect, and accountability.

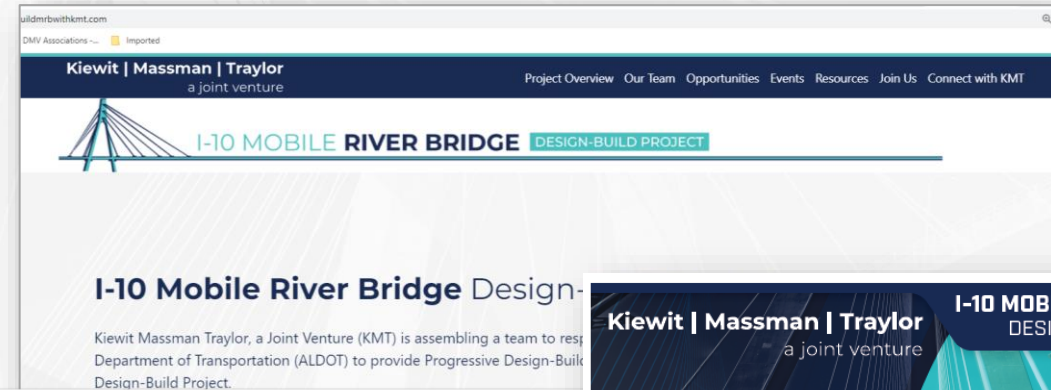
- Respectful behavior extends to everyone on the project, as well as prospective employees, subcontractors, vendors and clients.
- We believe in an inclusive environment and community.
- We have policies in place to ensure that we have a workplace that is free from discrimination.

KMT HAS ZERO TOLERANCE FOR DISCRIMINATION OR HARASSMENT.

Assistance and Resources

KMT is committed to providing information and resources to assist firms seeking opportunities to participate on the Project.

- Project Website: www.BuildMRBwithKMT.com
- Virtual Technical Assistance Hub
- Bidders' Reference Guide
- Events Calendar
- Resource List
- Project Mailbox: Info@KMTJV.com



VIRTUAL TECHNICAL ASSISTANCE HUB

RESOURCES TO HELP YOU GET "BID-READY!"

Click on topics below to access resources and training!

- ACCOUNTING**
 - Webinar: Boosting Your Bottom Line Preparing Your Business for Tax Time (WBDC)
 - Article: Construction Accounting 101 (Foundation Software)
 - Webinar: Accounting and Taxes (IL OMEG & SBDC)
 - Webinar: Small Business Tax Workshop Series (IRS)
 - Webinar: Master the CTA Invoice & Payments Process (CTA)
 - Webinar: Getting Paid And Closing Out (CTA)
- ALTERNATIVE DELIVERY**
 - PDF: Project Delivery Methods (UDOT)
 - PDF: Primer Progressive Design Build (DBIA)
 - Article: The Emergence of Progressive Design Build (DBIA)
- BACK TO BASICS**
 - Webinar: Construction Drawings Process Review (Illinois Tollway)
 - Article: North American Industry Classification System NAICS (Census)
 - Article: NAICS & SIC Identification Tools (USMCA)
 - PDF: Procurement Fundamentals Resource Guide (CHI DPS)
 - PDF: Procurement Fundamentals Workshop Presentation (CHI DSP)
 - PDF: eProcurement 101 (CHI DPS)
- BONDING**
 - PDF: AGC Surety Claims Guide (AGC)
 - PDF: Insurance and Surety Bonds (Illinois Tollway)
 - PDF: How to Obtain Surety Bonds (Illinois Tollway)
 - PDF: The Importance of Surety Bonds in Construction (Illinois Tollway)
- CERTIFICATION**
 - PDF: How to become certified (CHI DPS)
 - Webinar: How To Certify as a DBE I (CTA)
 - PDF: Certification A Tool for Strategic Growth! (WBDC)
 - Webinar: Disadvantaged Business Enterprise Certification Process (CTA)
 - PDF: Resource Guide Certification (CHI DPS)
 - Article: Contract Review Reminders (CE)
 - PDF: Construction Contracting Overview (CHI DPS)
- EMERGING TECHNOLOGY**
 - Webinar: Cyber Security (CTA)
- WEBSITE: Surety bonds (SBA)**
 - Webinar: SBA's Surety Bond Guarantee (SBA)
- ARTICLE: Surety Bonds for Small Business (Forbes)**
- BUSINESS DEVELOPMENT**
 - Webinar: What To Do For RFQs (CTA)
 - Webinar: Strategies for Writing Capability Statements That Work (WBDC)
 - Article: How to Write a Capability Statement: Guide & Sample for Contractors (Foundation Software)
 - Webinar: How to Write a Capabilities Statement (Norcal PTAC)
 - Webinar: Understanding the Federal Acquisition Regulation (FAR) (Norcal PTAC)
 - Webinar: Getting On Board with Business Opportunities (CTA)
 - Webinar: Responding to Contract Opportunities (CTA)
- ESTIMATING**
 - PDF: Construction Estimating (CBDC)
 - Webinar: Estimating & Bidding The Basics (Norcal PTAC)
 - Webinar: Estimating & Bidding Best Practices (Norcal PTAC)
 - Webinar: No Guesstimating Nailing Your Estimate (CTA)
- HR BEST PRACTICES**
 - Article: Human Resources (When I Work)
 - Article: The Complete Guide To Human Resources For Small Business (When I Work)
 - Article: Employee Benefits (AIA)
 - Webinar: Employee Recruitment and Retention Overview (SBA)
 - Webinar: Managing Your Talent (CTA)
- INSURANCE**
 - Webinar: Contractor's Insurance Programs (Norcal PTAC)
- OCIP**
 - Webinar: Rolling Owner Controlled Insurance Program (Illinois Tollway)
 - Article: Construction Wrap Up Insurance Programs (CE)
- OPERATIONS**
 - Webinar: Project Management Essentials (Illinois Tollway)
 - Webinar: On Schedule And On Budget (CTA)
 - Webinar: Compliance Do's, Don'ts, and Must's (CTA)
- PREVAILING WAGE**
 - Webinar: Federal Prevailing Wage (DBE Advantage)
- PDF: P**
 - Article (IL DOT)
 - Webini Wage I
 - Webini for Cor
 - Webini Report
- PROJEC**
 - PDF: V Agreeer
 - Article Labor
 - Article Project
- QUALIT**
 - PDF: D Manag
 - Article
- RISK M**
 - Webini Manag
 - Article
- SAFETY**
 - Webini Hazar
 - Article (OSHA)
 - PDF: S
 - PDF: S Handb
 - Article
- TEAMIN**
 - PDF: I (IHCC)
 - Webini Agreeer (Norca

I-10 MOBILE RIVER BRIDGE DESIGN-BUILD PROJECT

QUICK REFERENCE GUIDE
NEXT STEPS AND RESOURCES

JOIN OUR DATABASE!

To help us understand your capabilities and bidding interests and ensure that you are notified about future project opportunities and events, complete the following:

- 1 Scan the QR Code to complete our Subcontractor Questionnaire to help us understand your capabilities and bidding interests and ensure that you are notified about future project opportunities and events
- 2 After completing the Subcontractor Questionnaire, create an account with BuildingConnected at app.buildingconnected.com/create-account

Once your company information has been received through our Subcontractor Questionnaire, you will be added to our project mailing list. Please stay tuned for notifications via email and BuildingConnected once bid packages become available.

STAY INFORMED!

KMT is committed to keeping you informed. For project information and a list of anticipated bid opportunities, visit: www.BuildMRBwithKMT.com

GOALS AND CERTIFICATION INFORMATION

KMT is committed to meeting the business diversity goals established by the Alabama Department of Transportation (ALDOT) for this Project.

Firms should be certified as a Disadvantaged Business Enterprise (DBE) by the Alabama Unified Certification Program for participation to count towards the established DBE goal. Firms currently DBE-certified in their home state may apply for certification with ALDOT.

- For information about the DBE/Alabama Unified Certification Program process and certification requirements, visit: cpmsapps2.dot.state.al.us/alucp/home
- For questions pertaining to the DBE/Alabama Unified Certification Program OR on applying for DBE Certification with the Alabama Department of Transportation (ALDOT), contact call (334) 242-6242 or (888) 297-5305
- For more details regarding Interstate Certification, visit: www.dot.state.al.us/programs/DBEOutofStateFirms.html

QUESTIONS?

Email: Info@kmtjv.com
Website: www.BuildMRBwithKMT.com
Or scan QR code to add us to your contacts

We believe in partnering and investing in the local, small, and diverse businesses in the communities where we work and live.

Inclusion • Opportunity • Growth

We're Building More than a Bridge

KMT will maximize DBE opportunities through:

- Dividing work into economically feasible packages to assist local, small, and disadvantaged businesses and ensure meaningful participation
- Actively seeking out diverse businesses that will bring additional value to our clients
- Building upon new and existing subcontractor relationships to foster long-term partnerships
- Fostering the development and growth of existing and potential business partners
- Partnering with community and industry organizations focused on supporting small and disadvantaged businesses

Inclusion • Opportunity • Growth

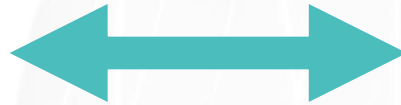
Stations and Networking

- Project Leadership Team
- Community / Industry Organizations
- Resources and Information
- Construction Services
- Materials / Supply / Support Services
- Professional Services

Get Connected. Stay Connected.

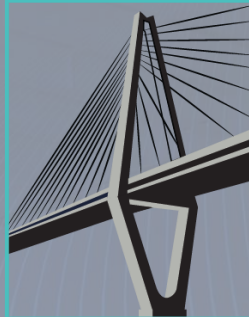


Email:
Info@KMTJV.com



Visit:
www.BuildMRBwithKMT.com

Thank You!



**KIEWIT
MASSMAN
TRAYLOR**
A JOINT VENTURE